

**THE CORPORATION OF
THE MUNICIPALITY OF STRATHROY-CARADOC
BY-LAW NO. 64-19**

A BY-LAW TO EXEMPT CERTAIN LANDS IN THE MUNICIPALITY OF STRATHROY-CARADOC FROM PART LOT CONTROL

WHEREAS Subsection 50(5) of the Planning Act, R.S.O 1990, c.P. 13 states that all lands located within a registered plan of subdivision are subject to part lot control;

WHEREAS Subsection 50(7) of the Planning Act, R.S.O 1990, c.P. 13 authorizes the council of a local municipality to enact by-laws to exempt certain lands located within a registered plan of subdivision from part lot control;

AND WHEREAS pursuant to Subsection 50(7) of the Planning Act, R.S.O 1990, c.P. 13, it is expedient to exempt from part lot control lands legally described as all of Lots 219, 236, 237, 238 239, 244 and 248, 249, 250, 251 and Block 272; all on Registered Plan 33M-619 in the Municipality of Strathroy-Caradoc in the County of Middlesex.

NOW THEREFORE BE IT ENACTED BY THE COUNCIL OF THE CORPORATION OF THE MUNICIPALITY OF STRATHROY-CARADOC AS FOLLOWS:

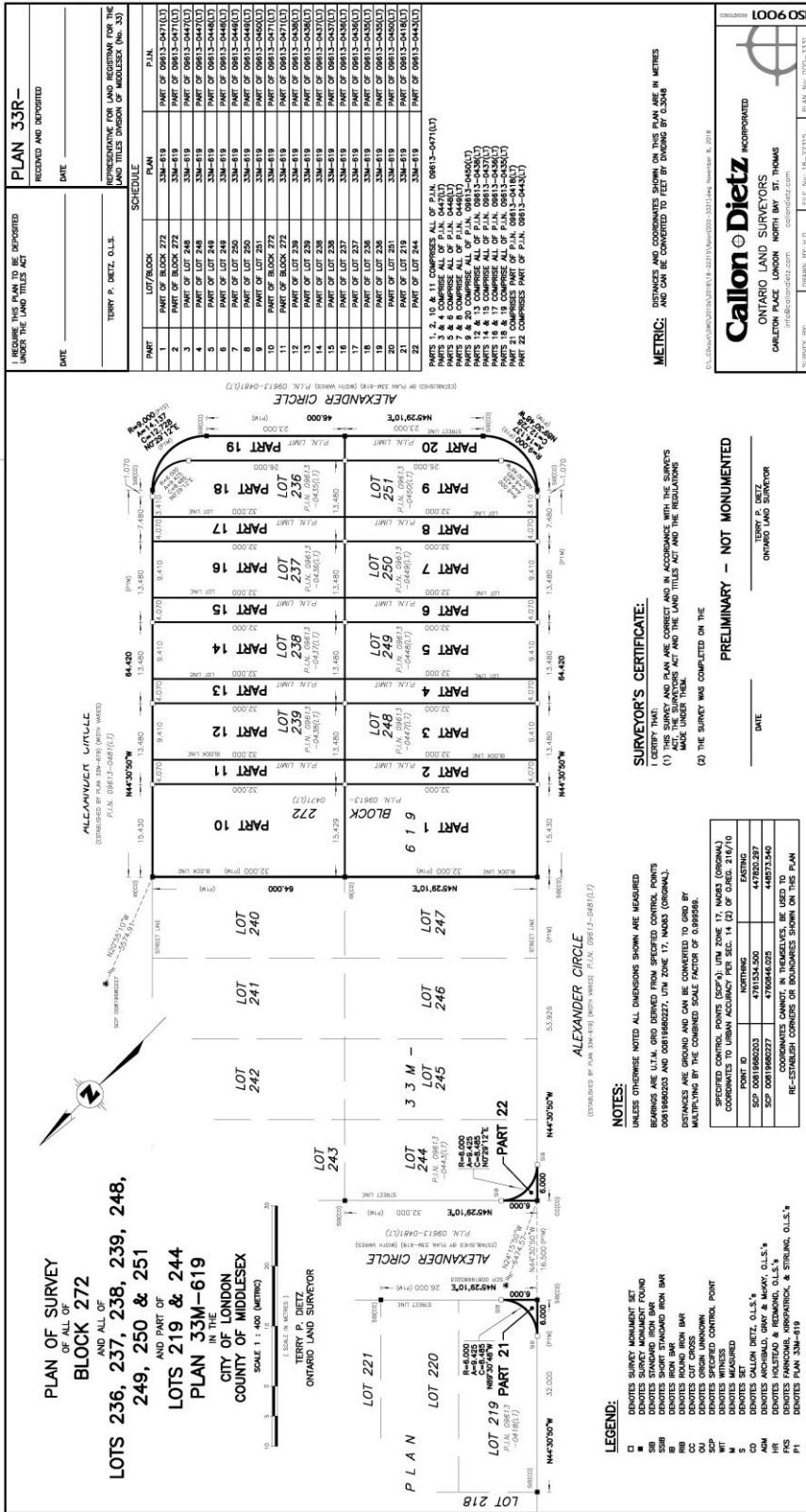
1. **THAT:** the lands legally described as all of Lots 219, 236, 237, 238 239, 244 and 248, 249, 250, 251 and Block 272; all on Registered Plan 33M-619 in the Municipality of Strathroy-Caradoc in the County of Middlesex; are hereby exempt from part lot control pursuant to Subsection 50(7) of the Planning Act, R.S.O 1990, c.P. 13, only insofar as to permit the transfer of the said lands shown on Schedule A of this By-law.
2. **THAT:** this exemption under Section 1 of this By-law pursuant to Subsection 50(7) of the Planning Act, R.S.O. 1990, c.P. 13 shall apply only until such time as the transfer of lands as shown on Schedule 'A' of this By-law has been completed and the re-configured lots and block registered and not to any further subdivision or reconfiguration of the building lots from that showing on Schedule 'A'. This exemption shall apply for 3 years from the date of this By-law coming into force.
3. **THAT:** this by-law comes into force upon approval thereof by the County of Middlesex pursuant to the requirements of the Planning Act, R.S.O 1990, c.P. 13.

Read a FIRST, SECOND AND THIRD TIME AND FINALLY PASSED IN OPEN COUNCIL this 21st day of October, 2019.

Mayor

Clerk

3
SCHEDULE A



PLAN 33R-
 RECEIVED AND DEPOSITED

DATE

REQUIRE THIS PLAN TO BE DEPOSITED
 UNDER THE LAND TITLES ACT

TERRY P. DIETZ, O.L.S.

DATE

REPRESENTATIVE FOR LAND REGISTRATION FOR THE
 LAND TITLES DIVISION OF MIDDLESEX (No. 33)

| PART | LOT/BLOCK | PLAN | P.L.N. |
|------|-------------------|---------|----------------------|
| 1 | PART OF BLOCK 272 | 33M-619 | PART OF 08S13-047(L) |
| 2 | PART OF BLOCK 272 | 33M-619 | PART OF 08S13-047(L) |
| 3 | PART OF LOT 248 | 33M-619 | PART OF 08S13-044(L) |
| 4 | PART OF LOT 248 | 33M-619 | PART OF 08S13-044(L) |
| 5 | PART OF LOT 249 | 33M-619 | PART OF 08S13-048(L) |
| 6 | PART OF LOT 249 | 33M-619 | PART OF 08S13-048(L) |
| 7 | PART OF LOT 250 | 33M-619 | PART OF 08S13-048(L) |
| 8 | PART OF LOT 251 | 33M-619 | PART OF 08S13-048(L) |
| 9 | PART OF BLOCK 272 | 33M-619 | PART OF 08S13-047(L) |
| 10 | PART OF BLOCK 272 | 33M-619 | PART OF 08S13-047(L) |
| 11 | PART OF BLOCK 272 | 33M-619 | PART OF 08S13-047(L) |
| 12 | PART OF LOT 236 | 33M-619 | PART OF 08S13-042(L) |
| 13 | PART OF LOT 238 | 33M-619 | PART OF 08S13-042(L) |
| 14 | PART OF LOT 238 | 33M-619 | PART OF 08S13-042(L) |
| 15 | PART OF LOT 237 | 33M-619 | PART OF 08S13-042(L) |
| 16 | PART OF LOT 237 | 33M-619 | PART OF 08S13-042(L) |
| 17 | PART OF LOT 236 | 33M-619 | PART OF 08S13-042(L) |
| 18 | PART OF LOT 236 | 33M-619 | PART OF 08S13-042(L) |
| 19 | PART OF LOT 251 | 33M-619 | PART OF 08S13-042(L) |
| 20 | PART OF LOT 251 | 33M-619 | PART OF 08S13-042(L) |
| 21 | PART OF LOT 244 | 33M-619 | PART OF 08S13-042(L) |
| 22 | PART OF LOT 244 | 33M-619 | PART OF 08S13-042(L) |

ALSO COMPRISE ALL OF P.L.N. 08S13-047(L)
 PARTS 3 & 4 COMPRISE ALL OF P.L.N. 044(L)
 PARTS 5 & 6 COMPRISE ALL OF P.L.N. 044(L)
 PARTS 7 & 8 COMPRISE ALL OF P.L.N. 08S13-048(L)
 PARTS 9 & 10 COMPRISE ALL OF P.L.N. 08S13-047(L)
 PARTS 11 & 12 COMPRISE ALL OF P.L.N. 08S13-047(L)
 PARTS 13 & 14 COMPRISE ALL OF P.L.N. 08S13-042(L)
 PARTS 15 & 16 COMPRISE ALL OF P.L.N. 08S13-042(L)
 PARTS 17 & 18 COMPRISE ALL OF P.L.N. 08S13-042(L)
 PARTS 19 & 20 COMPRISE ALL OF P.L.N. 08S13-042(L)
 PARTS 21 & 22 COMPRISE ALL OF P.L.N. 08S13-042(L)

Callon Dietz
 INCORPORATED
 ONTARIO LAND SURVEYORS
 CARLETON PLACE
 LONDON NORTH BAY, ST. THOMAS
 info@callondietz.com
 callondietz.com

10067051
 FILE NO. 18-22315
 PLAN NO. 0200-3331